



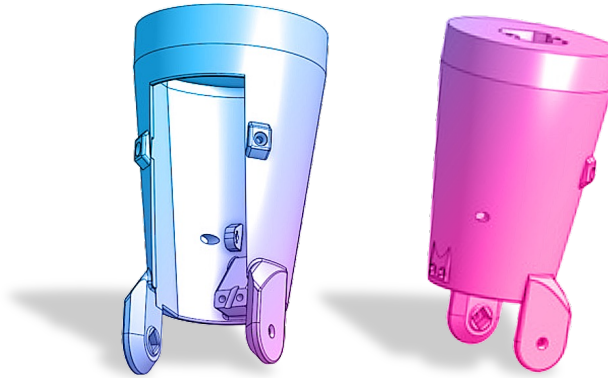
## How to build your robot

[www.pib.rocks/build](http://www.pib.rocks/build)

assembly instructions for:

### FOREARM

v2024



PRINT

BUILD

DEVELOP

YOUR OWN ROBOT

## Printable parts

Pib's forearm consists of 3 **printable parts** and is assembled in 4 **steps**.

In order to construct the forearm, you will need to print the forearm parts as seen in the table.

Please note: For better readability we use abbreviations in the tutorial: C19 instead of C19-Forearm\_distal\_top.

### Printable parts

**C19**-Forearm\_distal\_top

**C20**-Forearm\_cover

**C24**-Forearm\_tube\_enclosure

**C50**-Wrist Connector (x2)

## Non-printable parts

You will also need the following non-printable parts from our pib.Box Master.

If you do not have it yet, you can buy in our shop  
<https://shop.pib.rocks>.

### Non-printable parts

6 x **S01** M3 nuts

2 x **S04** M3 10 mm screws

2 x **S08** M3 20 mm screws

2 x **S10** M3 25 mm screws

2 x **M08** 20 mm metal rod

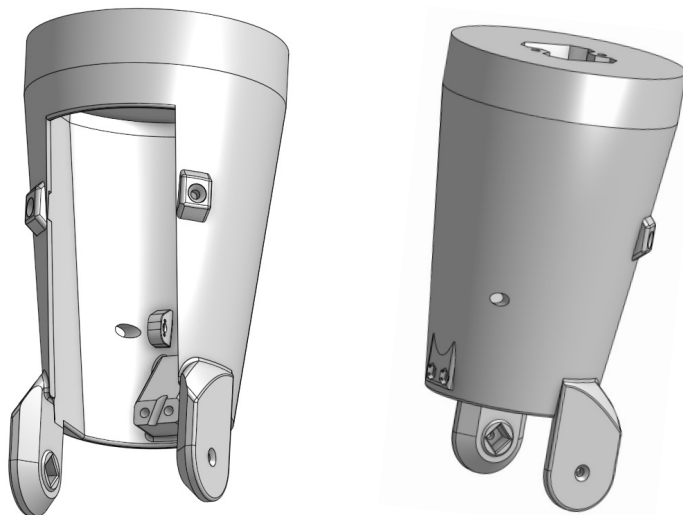
1 x **M11** T-460 spring

95cm Teflon tube

2 x tape block

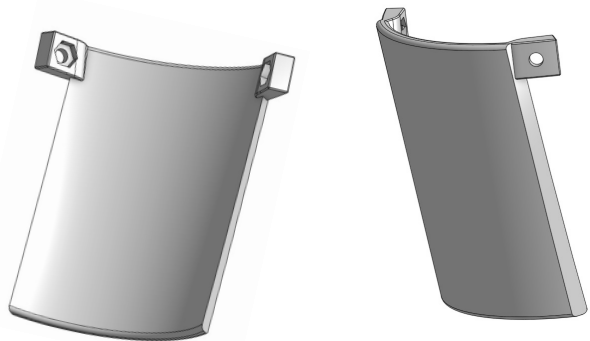
## Printable parts - Overview

C19-Forearm\_distal\_top

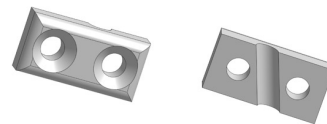


## Printable parts - Overview

C20-Forearm\_cover



C24-Forearm\_tube\_enclosure



## Build it better: our suggestion for assembling pib



We recommend **tools** for each step. These are a suggestion, you can of course also use other tools.



1-5

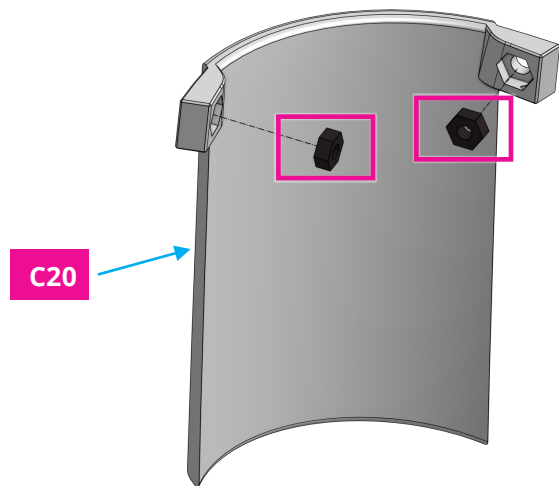
We have categorized each step according to its **difficulty** - from **1-5** (1 being the easiest, 5 the hardest)



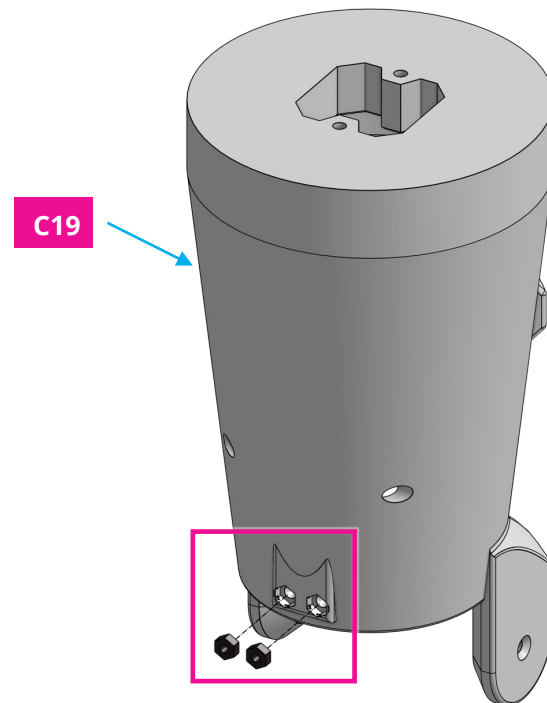
We also show you which **non-printable parts** you need for each step

## Step 1

Insert **4 x nuts** in the shown spots in **C19** and **C20**.



*It may be helpful to use a hammer to put the nuts into the holes.*



## Step 2

Use **M01** (metal rod) to fix **M11** (T-460-spring).



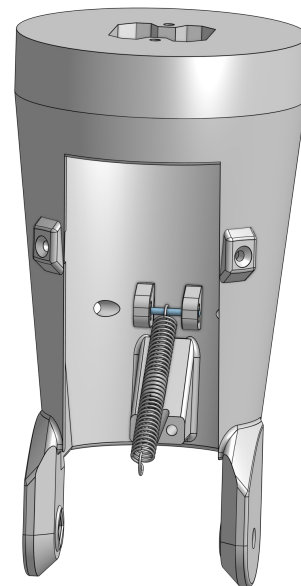
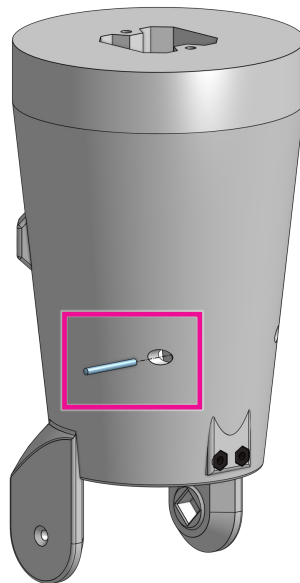
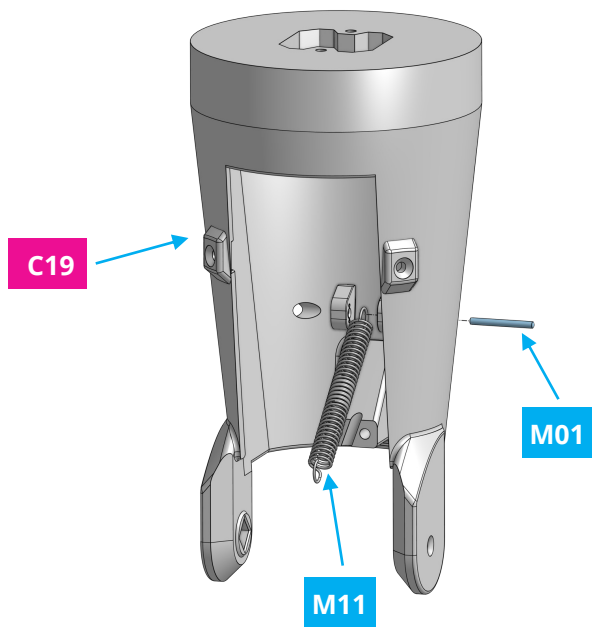
2



1x



1x





### Step 3

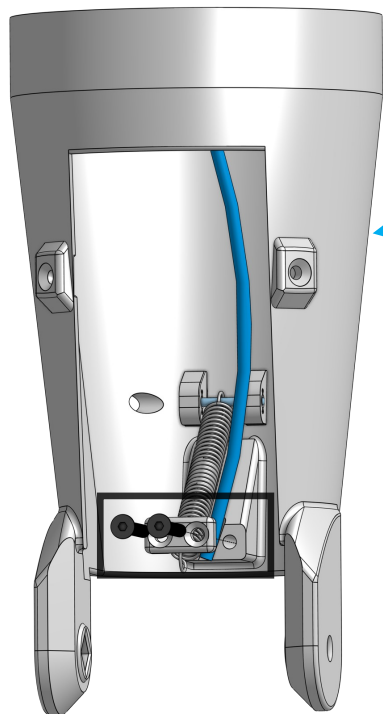
Cut 95cm of the **teflon tube**, wrap both ends with **tape** (not shown in picture) and place the teflon tube in the shown spot in **C19**. Lastly use **C24** and **2 x 25mm screws** to fix it.



95cm

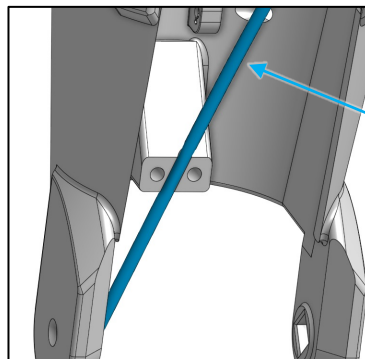


2x



C19

Both ends of the teflon tube should be wrapped with tape.

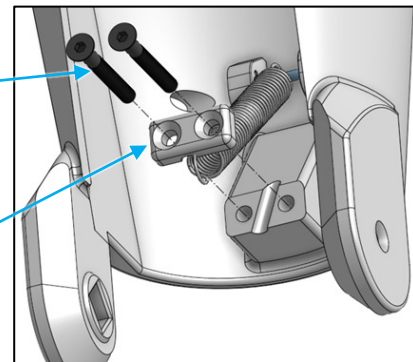


Teflon tube

2 x 25 mm screws

Note that the spring is not under C24, this is just the perspective. This spring will be connected to hand later

C24



## Step 4

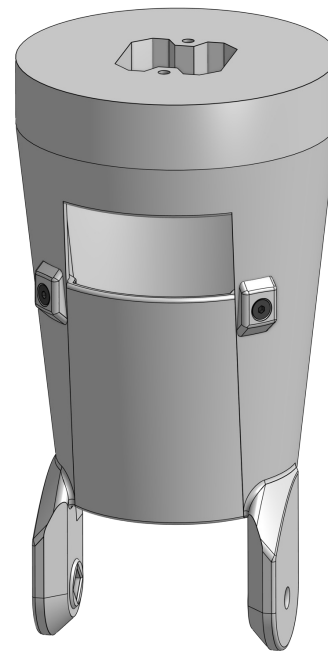
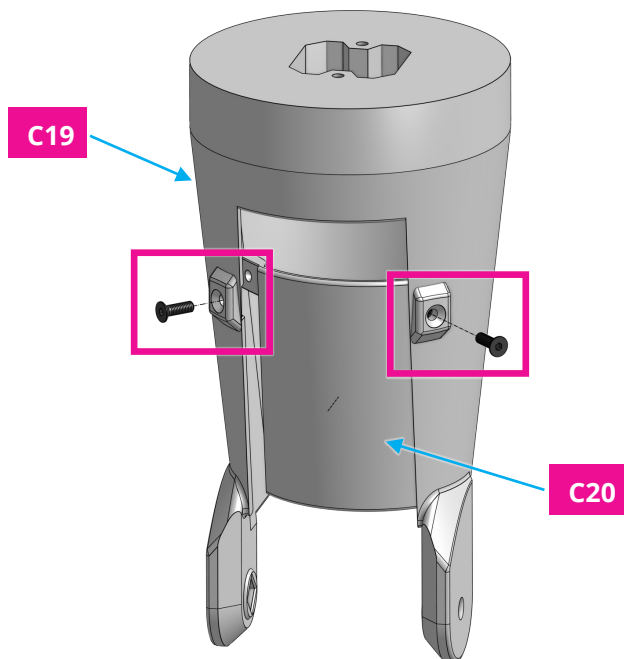
Connect **C20** to **C19** using **2x M3 12mm screws**. Do not tighten them yet, as we will remove them once again for wire guidance in the assembly-tutorial.



1

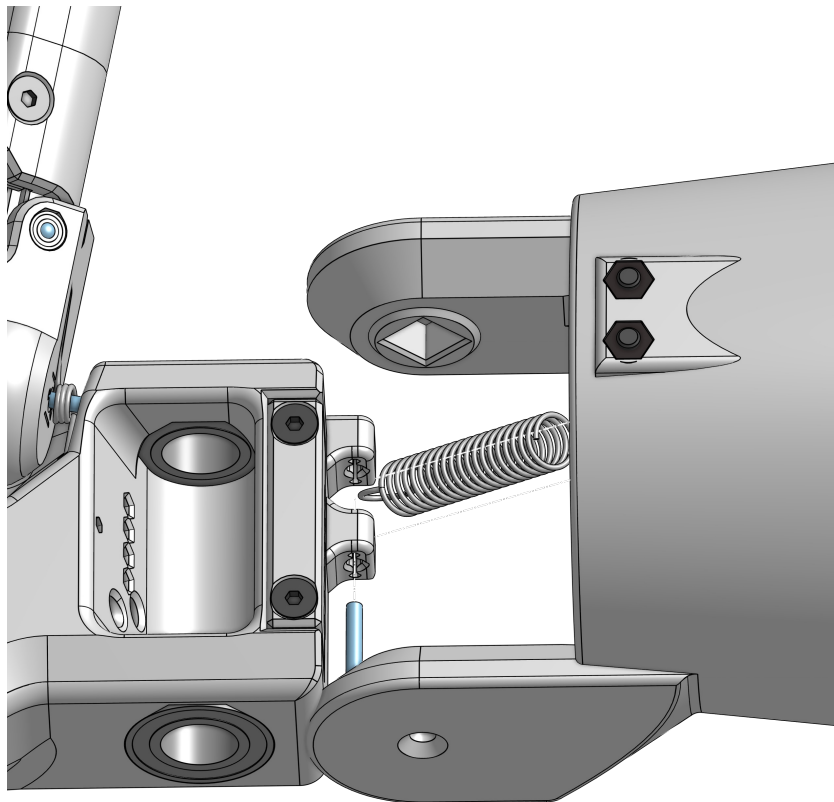
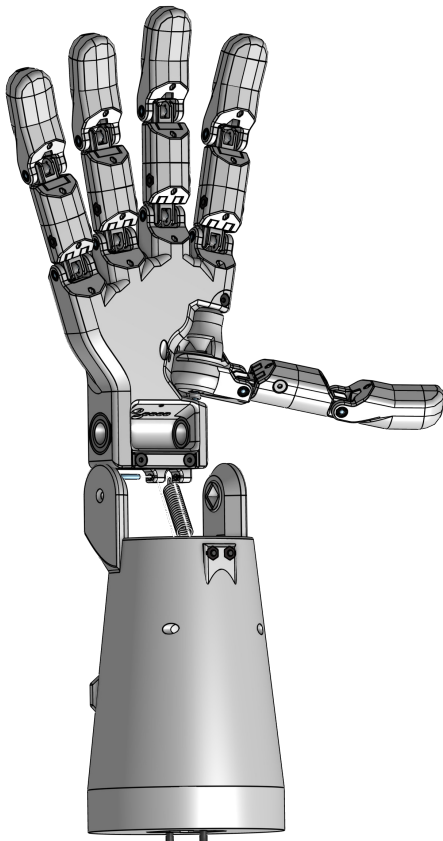


2x



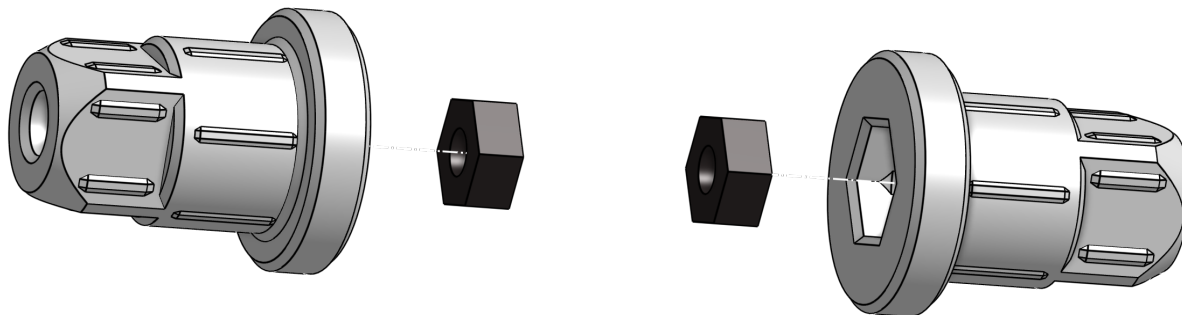
## Step 5a

Connect hand to forearm, by first connecting the spring out of the forearm to the shown part of hand using **M08** metal rod



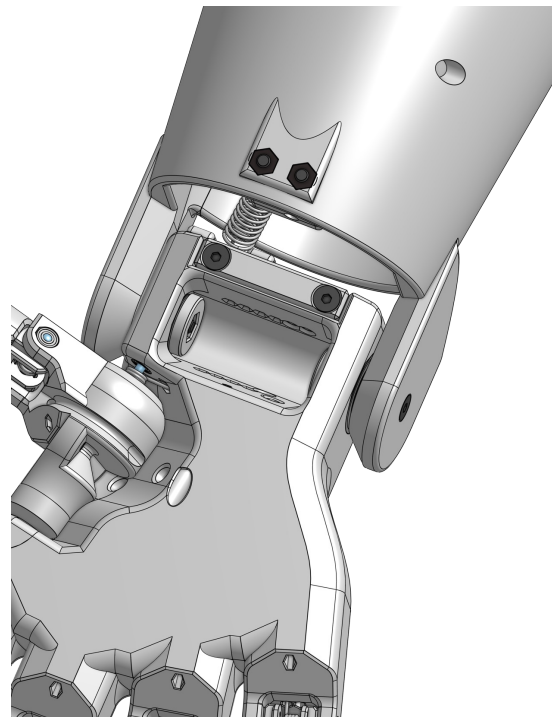
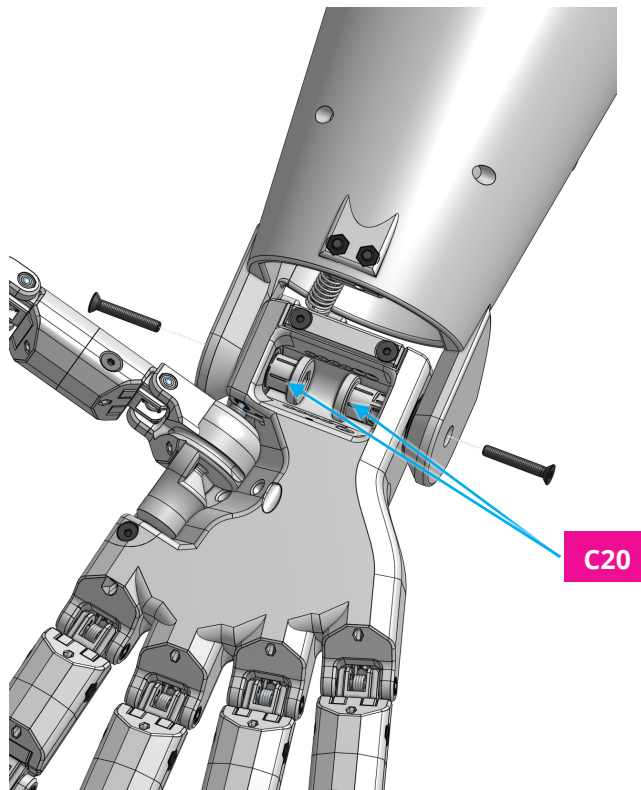
## Step 5b

Insert 2 M3 nuts in 2 **C50**



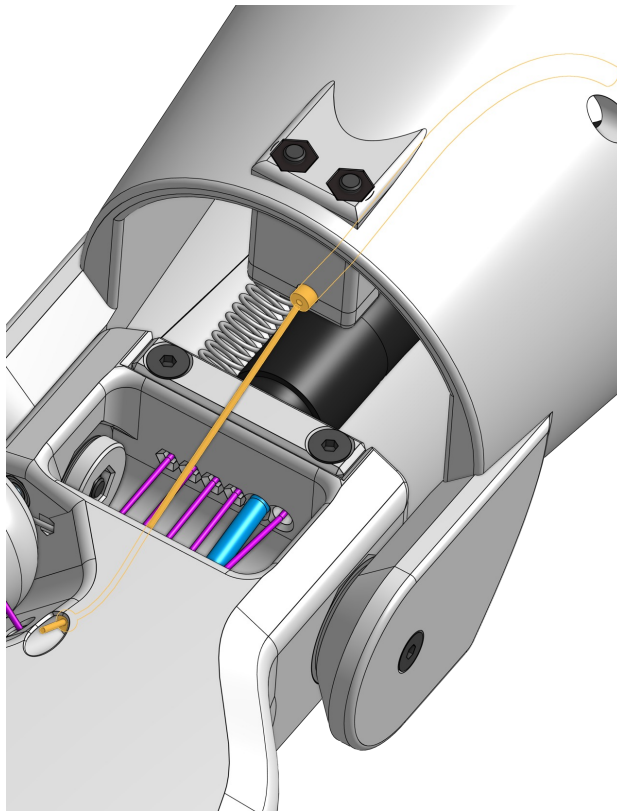
## Step 5c

Connect hand assembly to forearm using 2 **C50** from previous step and fix them with 2 **M3 20mm** screws



## Step 5d

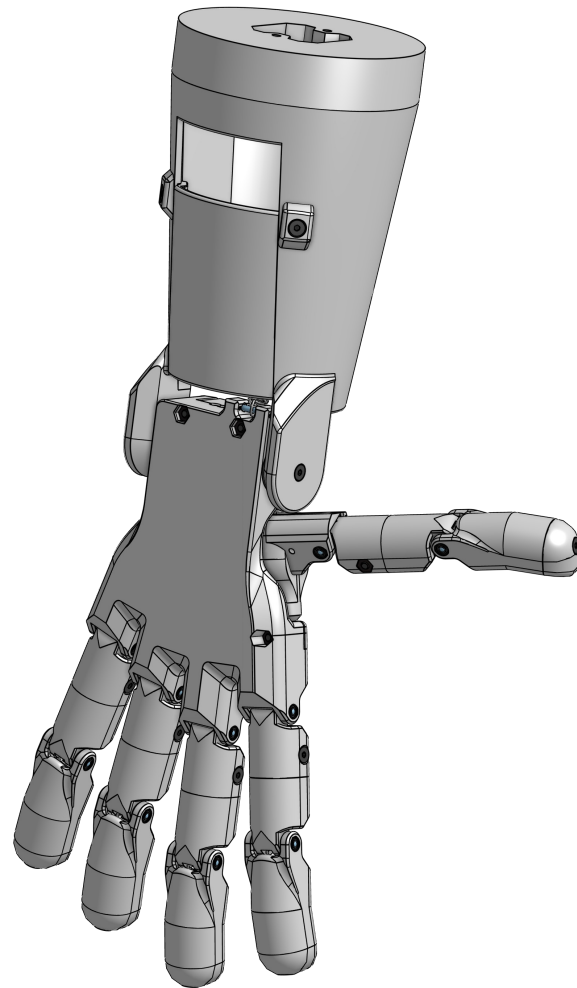
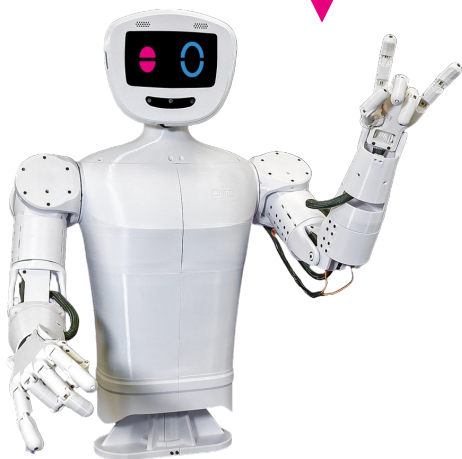
Insert flourocarbon wire coming out of hand to teflon tube in forearm



## Congratulations

You did a great job, the forearm is assembled!

Well done!



## Do you need support?

Or do you need our pib.Box with all non-printable parts?

Or maybe you have some new ideas and improvements?

Please contact us.



**team@pib.rocks**

Send us an email.



**discord.com/invite/GRdpyeDu7P**

Join us on Discord.



**shop.pib.rocks**

Order non-printable parts for pib.